



# **MARKSCHEME**

**May 2012**

**MATHEMATICS**

**Standard Level**

**Paper 2**

*This markscheme is **confidential** and for the exclusive use of examiners in this examination session.*

*It is the property of the International Baccalaureate and must **not** be reproduced or distributed to any other person without the authorization of IB Cardiff.*

## Instructions to Examiners

### Abbreviations

- M** Marks awarded for attempting to use a correct **Method**; working must be seen.
- (M)** Marks awarded for **Method**; may be implied by **correct** subsequent working.
- A** Marks awarded for an **Answer** or for **Accuracy**; often dependent on preceding **M** marks.
- (A)** Marks awarded for an **Answer** or for **Accuracy**; may be implied by **correct** subsequent working.
- R** Marks awarded for clear **Reasoning**.
- N** Marks awarded for **correct** answers if **no** working shown.
- AG** Answer given in the question and so no marks are awarded.

### Using the markscheme

#### 1 General

Mark according to scoris instructions and the document “**Mathematics SL: Guidance for e-marking May 2011**”. It is **essential** that you read this document before you start marking. In particular, please note the following.

Marks must be recorded using the annotation stamps. Please check that you are entering marks for the right question.

- If a part is **completely correct**, (and gains all the “must be seen” marks), use the ticks with numbers to stamp full marks.
- If a part is completely wrong, stamp **A0** by the final answer.
- If a part gains anything else, it **must** be recorded using **all** the annotations.

All the marks will be added and recorded by scoris.

#### 2 Method and Answer/Accuracy marks

- Do **not** automatically award full marks for a correct answer; all working **must** be checked, and marks awarded according to the markscheme.
- It is generally not possible to award **M0** followed by **A1**, as **A** mark(s) depend on the preceding **M** mark(s), if any. An exception to this rule is when work for **MI** is missing, as opposed to incorrect (see point 4).
- Where **M** and **A** marks are noted on the same line, *e.g.* **MIA1**, this usually means **MI** for an **attempt** to use an appropriate method (*e.g.* substitution into a formula) and **A1** for using the **correct** values.
- Where there are two or more **A** marks on the same line, they may be awarded independently; so if the first value is incorrect, but the next two are correct, award **A0A1A1**.
- Where the markscheme specifies **(M2)**, **N3**, *etc.*, do **not** split the marks, unless there is a note.
- Once a correct answer to a question or part-question is seen, ignore further working.

### 3 ***N* marks**

If **no** working shown, award *N* marks for **correct** answers. In this case, ignore mark breakdown (*M*, *A*, *R*).

- Do **not** award a mixture of *N* and other marks.
- There may be fewer *N* marks available than the total of *M*, *A* and *R* marks; this is deliberate as it penalizes candidates for not following the instruction to show their working.
- There may not be a direct relationship between the *N* marks and the implied marks. There are times when all the marks are implied, but the *N* marks are not the full marks: this indicates that we want to see some of the working, without specifying what.
- For consistency within the markscheme, *N* marks are noted for every part, even when these match the mark breakdown.
- If a candidate has incorrect working, which somehow results in a correct answer, do **not** award the *N* marks for this correct answer. However, if the candidate has indicated (usually by crossing out) that the working is to be ignored, award the *N* marks for the correct answer.

### 4 **Implied and must be seen marks**

*Implied marks appear in brackets e.g. (MI).*

- Implied marks can only be awarded if **correct** work is seen or if implied in subsequent working (a correct answer does not necessarily mean that the implied marks are all awarded). There are questions where some working is required, but as it is accepted that not everyone will write the same steps, all the marks are implied, but the *N* marks are not the full marks for the question.
- Normally the correct work is seen or implied in the next line.
- Where there is an (*MI*) followed by *AI* for each correct answer, if no working shown, one correct answer is sufficient evidence to award the (*MI*).

*Must be seen marks appear without brackets e.g. MI.*

- Must be seen marks can only be awarded if **correct** work is seen.
- If a must be seen mark is not awarded because work is missing (as opposed to *MO* or *AO* for incorrect work) all subsequent marks may be awarded if appropriate.

### 5 **Follow through marks (only applied after an error is made)**

*Follow through (FT) marks are awarded where an incorrect answer from one **part** of a question is used correctly in **subsequent** part(s) or subpart(s). Usually, to award **FT** marks, **there must be working present** and not just a final answer based on an incorrect answer to a previous part. However, if the only marks awarded in a subpart are for the answer (i.e. there is no working expected), then **FT** marks should be awarded if appropriate. Examiners are expected to check student work in order to award **FT** marks where appropriate.*

- Within a question part, once an **error** is made, no further *A* marks can be awarded for work which uses the error, but *M* marks may be awarded if appropriate. (However, as noted above, if an *A* mark is not awarded because work is missing, all subsequent marks may be awarded if appropriate)
- Exceptions to this rule will be explicitly noted on the markscheme.
- If the question becomes much simpler because of an error then use discretion to award fewer **FT** marks.
- If the error leads to an inappropriate value (e.g. probability greater than 1, use of  $r > 1$  for the sum of an infinite GP,  $\sin \theta = 1.5$ , non integer value where integer required), do not award the mark(s) for the final answer(s).
- The markscheme may use the word “their” in a description, to indicate that candidates may be using an incorrect value.

- If a candidate makes an error in one part, but gets the correct answer(s) to subsequent part(s), award marks as appropriate, unless the question says hence. It is often possible to use a different approach in subsequent parts that does not depend on the answer to previous parts.
- In a “show that” question, if an error leads to not showing the required answer, there is a 1 mark penalty. Note that if the error occurs within the same subpart, the *FT* rules may result in further loss of marks.
- Where there are anticipated common errors, the *FT* answers are often noted on the markscheme, to help examiners. It should be stressed that these are not the only *FT* answers accepted.

## 6 Mis-read

*If a candidate incorrectly copies information from the question, this is a mis-read (MR). Apply a MR penalty of 1 mark to that question. Award the marks as usual and then stamp MR against the answer. Scoris will automatically deduct 1 mark from the question total. A candidate should be penalized only once for a particular mis-read. Do not stamp MR again for that question, unless the candidate makes another mis-read.*

- If the question becomes much simpler because of the *MR*, then use discretion to award fewer marks.
- If the *MR* leads to an inappropriate value (e.g. probability greater than 1, use of  $r > 1$  for the sum of an infinite GP,  $\sin \theta = 1.5$ , non integer value where integer required), do not award the mark(s) for the final answer(s).
- Miscopying of candidates’ own work does **not** constitute a misread, it is an error.

## 7 Discretionary marks (*d*)

*An examiner uses discretion to award a mark on the rare occasions when the markscheme does not cover the work seen. In such cases the annotation DM should be used and a brief **note** written next to the mark explaining this decision.*

## 8 Alternative methods

*Candidates will sometimes use methods other than those in the markscheme. Unless the question specifies a method, other correct methods should be marked in line with the markscheme. If in doubt, contact your team leader for advice.*

- Alternative methods for complete questions are indicated by **METHOD 1**, **METHOD 2**, etc.
- Alternative solutions for part-questions are indicated by **EITHER . . . OR**.
- Where possible, alignment will also be used to assist examiners in identifying where these alternatives start and finish.

## 9 Alternative forms

*Unless the question specifies otherwise, **accept** equivalent forms.*

- As this is an international examination, accept all alternative forms of **notation**.
- In the markscheme, equivalent **numerical** and **algebraic** forms will generally be written in brackets immediately following the answer.
- In the markscheme, **simplified** answers, (which candidates often do not write in examinations), will generally appear in brackets. Marks should be awarded for either the form preceding the bracket or the form in brackets (if it is seen).

## 10 Accuracy of Answers

*If the level of accuracy is specified in the question, a mark will be allocated for giving the answer to the required accuracy. When this is not specified in the question, all numerical answers should be given exactly or correct to three significant figures*

*Candidates should NO LONGER be penalized for an accuracy error (AP). Examiners should award marks according to the rules given in these instructions and the markscheme. Accuracy is not the same as correctness – an incorrect value does not achieve relevant A marks. It is only final answers which may lose marks for accuracy errors, not intermediate values. Please check work carefully for FT. Further information on which answers are accepted is given in a separate booklet, along with examples. It is **essential** that you read this carefully, as there are a number of changes.*

Do not accept unfinished numerical answers such as 3/0.1 (unless otherwise stated). As a rule, numerical answers with more than one part (such as fractions) should be given using integers (e.g. 6/8). Calculations which lead to integers should be completed, with the exception of fractions which are not whole numbers.

## 11 Calculators

*A GDC is required for paper 2, but calculators with symbolic manipulation features (e.g. TI-89) are not allowed.*

### Calculator notation

The Mathematics SL guide says:

*Students must always use correct mathematical notation, not calculator notation.*

Do **not** accept final answers written using calculator notation. However, do not penalize the use of calculator notation in the working.

## 12 Style

*The markscheme aims to present answers using good communication, e.g. if the question asks to find the value of  $k$ , the markscheme will say  $k = 3$ , but the marks will be for the correct value 3 – there is usually no need for the “ $k =$ ”. In these cases, it is also usually acceptable to have another variable, as long as there is no ambiguity in the question, e.g. if the question asks to find the value of  $p$  and of  $q$ , then the student answer needs to be clear. Generally, the only situation where the full answer is required is in a question which asks for equations – in this case the markscheme will say “must be an equation”.*

*The markscheme often uses words to describe what the marks are for, followed by examples, using the e.g. notation. These examples are not exhaustive, and examiners should check what candidates have written, to see if they satisfy the description. Where these marks are **M** marks, the examples may include ones using poor notation, to indicate what is acceptable.*

## 13 Candidate work

If a candidate has drawn a line through work on their examination script, or in some other way crossed out their work, do not award any marks for that work.

**SECTION A**

1. (a)  $\hat{R}PQ = 65^\circ$  *AI* *N1*  
*[1 mark]*
- (b) evidence of choosing sine rule *(M1)*  
 correct substitution *AI*  
*e.g.*  $\frac{PR}{\sin 45^\circ} = \frac{9}{\sin 65^\circ}$   
 7.021854078  
 PR=7.02 *AI* *N2*  
*[3 marks]*
- (c) correct substitution *(A1)*  
*e.g.*  $\text{area} = \frac{1}{2} \times 9 \times 7.02 \dots \times \sin 70^\circ$   
 29.69273008  
 area = 29.7 *AI* *N2*  
*[2 marks]*  
*Total [6 marks]*

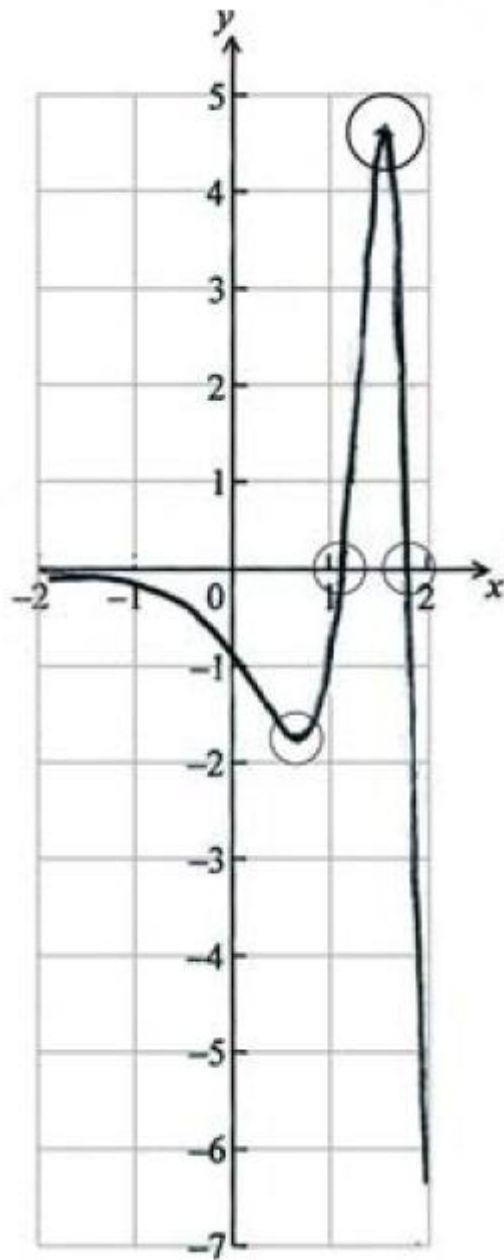
2. (a)  $f'(x) = -e^x \sin(e^x)$

*AIAI*

*N2*

[2 marks]

(b)



*AIAIAIAI*

*N4*

**Note:** Award *AI* for shape that must have the correct domain (from  $-2$  to  $+2$ ) and correct range (from  $-6$  to  $4$ ), *AI* for minimum in circle, *AI* for maximum in circle and *AI* for intercepts in circles.

[4 marks]

Total [6 marks]



3. (a) correct substitution into sum of a geometric sequence (AI)  
*e.g.*  $200\left(\frac{1-r^4}{1-r}\right)$ ,  $200 + 200r + 200r^2 + 200r^3$   
 attempt to set up an equation involving a sum and 324.8 MI  
*e.g.*  $200\left(\frac{1-r^4}{1-r}\right) = 324.8$ ,  $200 + 200r + 200r^2 + 200r^3 = 324.8$   
 $r = 0.4$  (exact) A2 N3  
 [4 marks]
- (b) correct substitution into formula AI  
*e.g.*  $u_{10} = 200 \times 0.4^9$   
 $u_{10} = 0.0524288$  (exact), 0.0524 AI N1  
 [2 marks]
- Total [6 marks]
4. (a) evidence of appropriate method (MI)  
*e.g.*  $z = \frac{122.5 - 117}{5}$ , sketch of normal curve showing mean and 122.5, 1.1  
 $P(Z < 1.1) = 0.8643$  (AI)  
 0.135666  
 $P(H > 122.5) = 0.136$  AI N3  
 [3 marks]
- (b)  $z = 0.3853$  (AI)  
 set up equation (MI)  
*e.g.*  $\frac{X - 117}{5} = 0.3853$ , sketch  
 $k = 118.926602$   
 $k = 199$  AI N3  
 [3 marks]
- Total [6 marks]

5. (a) recognizing that acceleration is the derivative of velocity (seen anywhere) **(R1)**  
*e.g.*  $a = \frac{d^2s}{dt^2}, v', 12 - 6t^2$

correctly substituting 2.7 into their expression for  $a$  (not into  $v$ ) **(A1)**  
*e.g.*  $s''(2.7)$

acceleration = -31.74 (exact), -31.7 **A1 N3**  
**[3 marks]**

(b) recognizing that displacement is the integral of velocity **R1**  
*e.g.*  $s = \int v$

Correctly substituting 1.3 **(A1)**  
*e.g.*  $\int_0^{1.3} v dt$

displacement = 7.41195 (exact), 7.41 (cm) **A1 N2**  
**[3 marks]**

**Total [6 marks]**

6. (a)  $A^{-1} = \begin{pmatrix} 1 & 0 & 1 \\ 0 & 2 & 1 \\ 1 & 1 & 1 \end{pmatrix}$  **A2 N2**  
**[2 marks]**

(b) **Note :** The first two steps may be done in any order.

evidence of premultiplying by  $A^{-1}$  **(M1)**

evidence of postmultiplying by  $A$  **(M1)**

correct expression **(A1)**  
*e.g.*  $A^{-1}BA, A^{-1}ACA^{-1}A = A^{-1}BA$

$C = \begin{pmatrix} 3 & 0 & 1 \\ 2 & -1 & 1 \\ 4 & 0 & 0 \end{pmatrix}$  **A2 N3**  
**[5 marks]**

**Total [7 marks]**

7.

(a) evidence of recognizing binomial (seen anywhere) (MI)  
e.g.  $B(n, p)$ ,  $0.95^{30}$

finding  $P(X = 0) = 0.21463876$  (AI)

appropriate approach (MI)  
e.g. complement, summing probabilities

0.785361  
probability is 0.785 AI N3  
[4 marks]

(b) identifying correct outcomes (seen anywhere) (AI)  
e.g.  $P(X = 1) + P(X = 2)$ , 1 or 2 defective,  $0.3389\dots + 0.2586\dots$

recognizing conditional probability (seen anywhere) RI  
e.g.  $P(A|B)$ ,  $P(X \leq 2|X \geq 1)$ ,  $P(\text{at most } 2|\text{at least } 1)$

appropriate approach involving conditional probability (MI)  
e.g.  $\frac{P(X = 1) + P(X = 2)}{P(X \geq 1)}$ ,  $\frac{0.3389\dots + 0.2586\dots}{0.785\dots}$ ,  $\frac{1 \text{ or } 2}{0.785}$

0.760847  
probability is 0.761 AI N2  
[4 marks]

Total [8 marks]

**SECTION B**

8. (a) (i) valid approach (M1)  
*e.g.*  $\vec{OA} + \vec{AB}$
- $\vec{OB} = 4i + 3j$  A1 N2
- (ii) valid approach (M1)  
*e.g.*  $\vec{OA} + \vec{AB} + \vec{BF}$ ;  $\vec{OB} + \vec{BF}$ ;  $\vec{OC} + \vec{CG} + \vec{GF}$
- $\vec{OF} = 4i + 3j + 2k$  A1 N2
- (iii) correct approach A1  
*e.g.*  $\vec{AO} + \vec{OC} + \vec{CG}$ ;  $\vec{AB} + \vec{BF} + \vec{FG}$ ;  $\vec{AB} + \vec{BC} + \vec{CG}$
- $\vec{AG} = -4i + 3j + 2k$  AG N0  
[5 marks]
- (b) (i) **any** correct equation for (OF) in the form  $\mathbf{r} = \mathbf{a} + t\mathbf{b}$  A2 N2  
 where  $\mathbf{a}$  is 0 or  $4i + 3j + 2k$ , and  $\mathbf{b}$  is a scalar multiple of  $4i + 3j + 2k$
- e.g.*  $\mathbf{r} = t(4, 3, 2)$ ,  $\mathbf{r} = \begin{pmatrix} 4t \\ 3t \\ 2t \end{pmatrix}$ ,  $\mathbf{r} = 4i + 3j + 2k + t(4i + 3j + 2k)$
- (ii) **any** correct equation for (AG) in the form  $\mathbf{r} = \mathbf{a} + s\mathbf{b}$  A2 N2  
 where  $\mathbf{a}$  is  $4i$  or  $3j + 2k$  and  $\mathbf{b}$  is a scalar multiple of  $-4i + 3j + 2k$
- e.g.*  $\mathbf{r} = (4, 0, 0) + s(-4, 3, 2)$ ,  $\mathbf{r} = \begin{pmatrix} 4 - 4s \\ 3s \\ 2s \end{pmatrix}$ ,  $\mathbf{r} = 3j + 2k + s(-4i + 3j + 2k)$

[4 marks]

continued ...

*Question 8 continued*

(c) choosing correct direction vectors,  $\vec{OF}$  and  $\vec{AG}$  **(AI)(AI)**

scalar product =  $-16 + 9 + 4$  ( $= -3$ ) **(AI)**

magnitudes  $\sqrt{4^2 + 3^2 + 2^2}$ ,  $\sqrt{(-4)^2 + 3^2 + 2^2}$  ( $\sqrt{29}$ ,  $\sqrt{29}$ ) **(AI)(AI)**

substitution into formula **MI**

$$e.g. \cos \theta = \frac{-16 + 9 + 4}{\left(\sqrt{4^2 + 3^2 + 2^2}\right) \times \sqrt{(-4)^2 + 3^2 + 2^2}} = \left(-\frac{3}{29}\right)$$

95.93777°, 1.67443 radians

$\theta = 95.9^\circ$  or 1.67 **AI**      **N4**

**[7 marks]**

**Total [16 marks]**

9. (a) attempt to substitute coordinates in  $f$  (MI)  
 e.g.  $f(2) = 9$
- correct substitution AI  
 e.g.  $a \times 2^3 + b \times 2^2 + c = 9$
- $8a + 4b + c = 9$  AG NO  
 [2 marks]
- (b) recognizing that (1, 4) is on the graph of  $f$  (MI)  
 e.g.  $f(1) = 4$
- correct equation AI  
 e.g.  $a + b + c = 4$
- recognizing that  $f' = 0$  at minimum (seen anywhere) (MI)  
 e.g.  $f'(1) = 0$
- $f'(x) = 3ax^2 + 2bx$  (seen anywhere) AIAI
- correct substitution into derivative (AI)  
 e.g.  $3a \times 1^2 + 2b \times 1 = 0$
- correct simplified equation AI  
 e.g.  $3a + 2b = 0$
- [7 marks]
- (c) valid method for solving system of equations (MI)  
 e.g. inverse of a matrix, substitution
- $a = 2, b = -3, c = 5$  AIAIAI N4  
 [4 marks]
- Total [13 marks]

10. (a) correct substitution into cosine rule AI

e.g.  $PQ^2 = r^2 + r^2 - 2(r)(r)\cos(2\theta)$ ,  $PQ^2 = 2r^2 - 2r^2(\cos(2\theta))$

substituting  $1 - 2\sin^2 \theta$  for  $\cos 2\theta$  (seen anywhere) AI

e.g.  $PQ^2 = 2r^2 - 2r^2(1 - 2\sin^2 \theta)$

working towards answer (AI)

e.g.  $PQ^2 = 2r^2 - 2r^2 + 4r^2 \sin^2 \theta$

recognizing  $2r^2 - 2r^2 = 0$  (including crossing out) (seen anywhere) AI

e.g.  $PQ^2 = 4r^2 \sin^2 \theta$ ,  $PQ = \sqrt{4r^2 \sin^2 \theta}$

$PQ = 2r \sin \theta$  AG N0

(b)  $PRQ = r \times 2\theta$  (seen anywhere) (AI) [4 marks]

correct set up AI

e.g.  $1.3 \times 2r \sin \theta - r \times (2\theta) = 0$

attempt to eliminate  $r$  (MI)

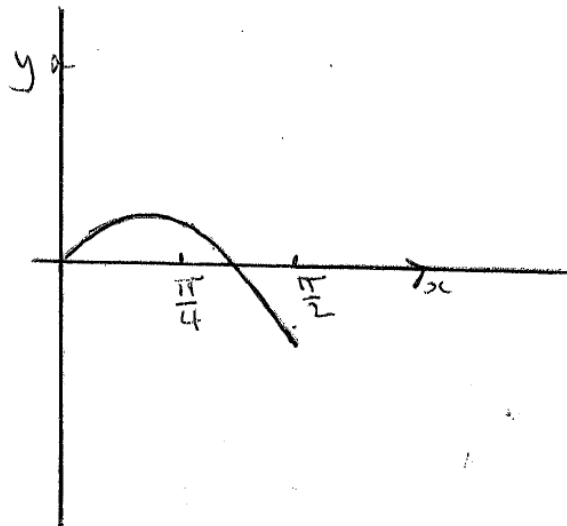
correct equation in terms of the one variable  $\theta$  (AI)

e.g.  $1.3 \times 2 \sin \theta - 2\theta = 0$

1.221496215

$\theta = 1.22$  (accept  $70.0^\circ$  (69.9)) AI N3

(c) (i)



AIAIAI N3

**Note:** Award **AI** for approximately correct shape, **AI** for  $x$ -intercept in approximately correct position, **AI** for domain. Do not penalise if sketch starts at origin.

(ii) 1.221496215

$\theta = 1.22$

AI NI

[4 marks]

- (d) evidence of appropriate approach (may be seen earlier)  
*e.g.*  $2\theta < 2.6\sin\theta$ ,  $0 < f(\theta)$ , showing positive part of sketch

**M2**

$$0 < \theta < 1.221496215$$

$$0 < \theta = 1.22 \text{ (accept } \theta < 1.22)$$

**A1**

**N1**

**[3 marks]**

**Total [16 marks]**

---